



**Dixie Precast, Inc.**  
**Precast Concrete Retaining Wall**  
**Installation Instructions**

The Dixie Precast Precast Concrete Retaining Wall is composed of 2' H x 4' L precast panels that are assembled to make 2', 4', and 6' high walls available in 4' incremental lengths. All posts and associated hardware are also made of galvanized steel. The walls are supplied complete with all parts required for installation. The precast concrete walls are assembled in either straight, 45°, and 90° configurations. The walls are available with or without handrail, depending upon the location and application of the wall.

To insure proper retainage and support, all procedures should be followed, including installation of anchors and back supports. Installation heights of over 6' shall be installed with a tiered approach. Recommended wall separation for tiered applications shall be approximately 2' – 4' between wall locations.

Installation Procedure:

1. Lay out the area for the wall installation. Insure the area where the actual wall will be placed (the footprint) is relatively level. This allows the panels to be installed easier.



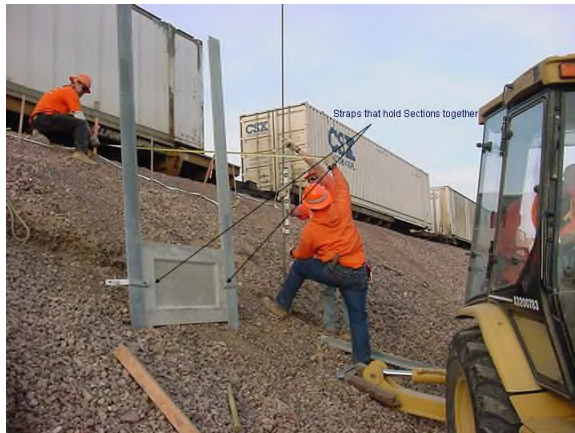
2950 Angelette Drive  
Austell, GA 30106  
(770) 944-1930  
Fax (770) 944-9136  
[www.dixieprecast.com](http://www.dixieprecast.com)



2. Drive the center post into place. This will serve as the start point for the construction of the wall.



3. Position the first concrete panel into place to determine placement of the next post. Install the post in the proper location.



2950 Angelette Drive  
Austell, GA 30106  
(770) 944-1930  
Fax (770) 944-9136  
[www.dixieprecast.com](http://www.dixieprecast.com)



4. Install brackets on both side of the panels/posts, using the bolt to secure the panel in place. Continue installation of the panels and posts as layout requires.



5. After installation of the lower panels and panels are secured in place with the brackets, the next panel is installed on top of the lower panel and secured in place with brackets. Refer to Detail Sheets 1 & 2 for specific brackets and assembly detail.



2950 Angelette Drive  
Austell, GA 30106  
(770) 944-1930  
Fax (770) 944-9136  
[www.dixieprecast.com](http://www.dixieprecast.com)



6. Install the back anchors as shown on the drawings. The anchors should be located as to not interfere with the foundation or structure. The anchor cable is placed around the bracket and secured with the supplied cable clamps.



7. The other end of the cable is secured to the clevis end of the anchor. One cable is supplied for each post (excluding end posts). One anchor is supplied for every two cables.
8. Backfill the area behind the wall with appropriate material. Material should be tamped to 90% compaction.
9. If the wall is supplied with a handrail, the cable is ran through the top of the posts and secured with the cable clamps. The cable guards are installed on the cable as required.

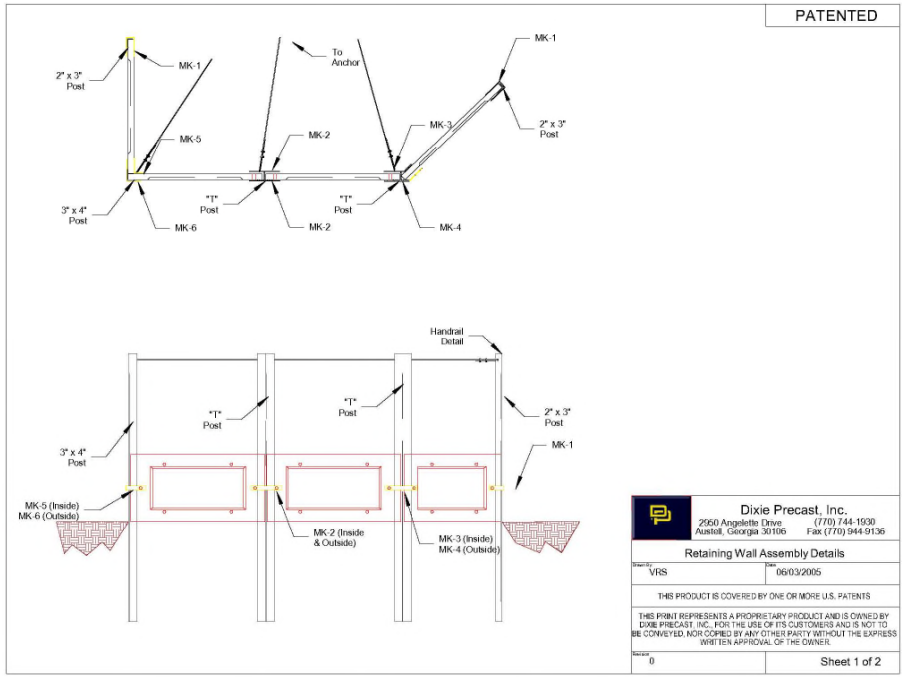
2950 Angelette Drive  
Austell, GA 30106  
(770) 944-1930  
Fax (770) 944-9136  
[www.dixieprecast.com](http://www.dixieprecast.com)



10. Complete installation and backfill for finished installation.



2950 Angelette Drive  
Austell, GA 30106  
(770) 944-1930  
Fax (770) 944-9136  
[www.dixieprecast.com](http://www.dixieprecast.com)



**Dixie Precast, Inc.**  
 2950 Angelette Drive (770) 744-1930  
 Austell, Georgia 30106 Fax (770) 944-9136

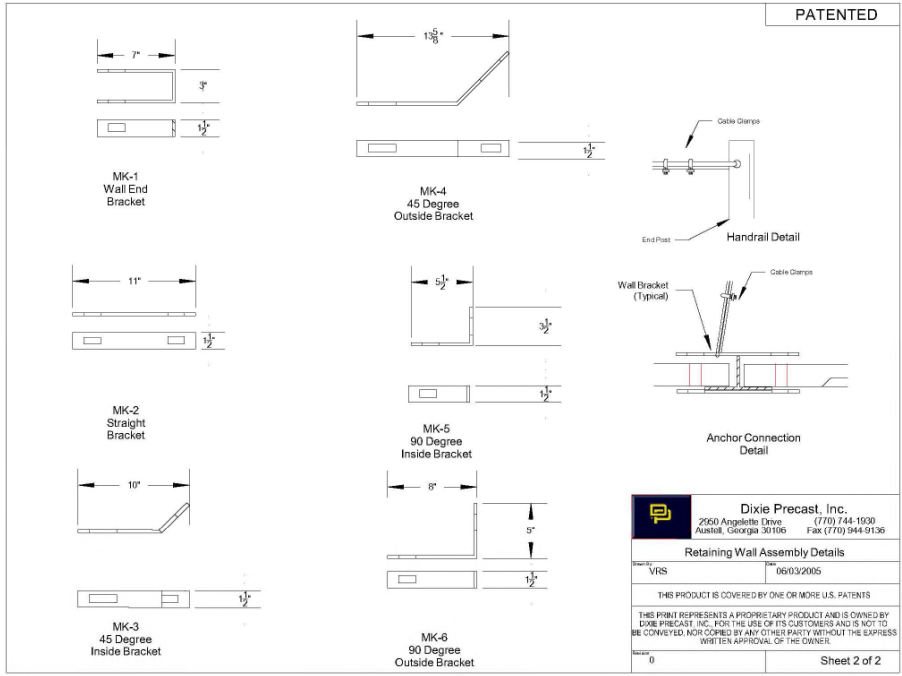
**Retaining Wall Assembly Details**

REV: VRS 06/03/2005

THIS PRODUCT IS COVERED BY ONE OR MORE U.S. PATENTS

THIS PRINT REPRESENTS A PROPRIETARY PRODUCT AND IS OWNED BY DIXIE PRECAST, INC. FOR THE USE OF ITS CUSTOMERS AND IS NOT TO BE CONVEYED, NOR COPIED BY ANY OTHER PARTY WITHOUT THE EXPRESS WRITTEN APPROVAL OF THE OWNER.

0 Sheet 1 of 2



**Dixie Precast, Inc.**  
 2950 Angelette Drive (770) 744-1930  
 Austell, Georgia 30106 Fax (770) 944-9136

**Retaining Wall Assembly Details**

REV: VRS 06/03/2005

THIS PRODUCT IS COVERED BY ONE OR MORE U.S. PATENTS

THIS PRINT REPRESENTS A PROPRIETARY PRODUCT AND IS OWNED BY DIXIE PRECAST, INC. FOR THE USE OF ITS CUSTOMERS AND IS NOT TO BE CONVEYED, NOR COPIED BY ANY OTHER PARTY WITHOUT THE EXPRESS WRITTEN APPROVAL OF THE OWNER.

0 Sheet 2 of 2

2950 Angelette Drive  
 Austell, GA 30106  
 (770) 944-1930  
 Fax (770) 944-9136  
 www.dixieprecast.com